

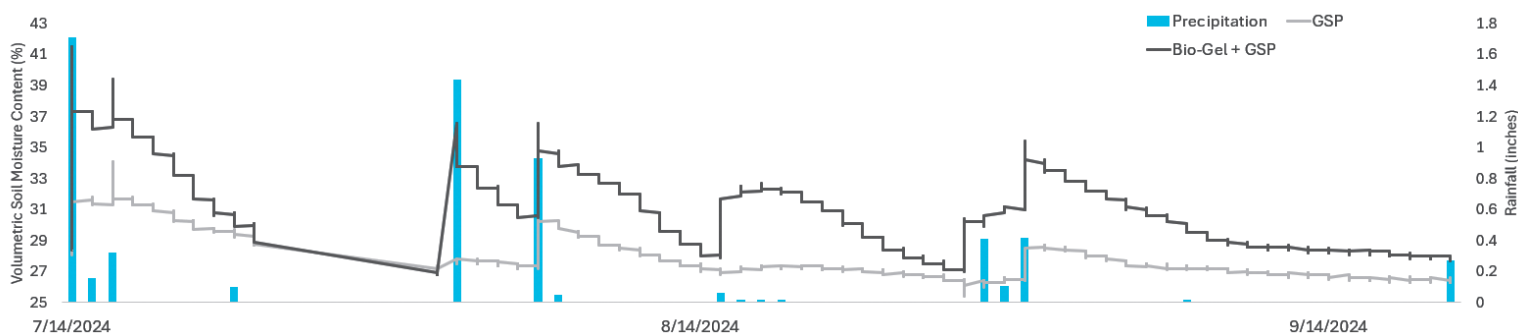
Bio-Gel[®] Technology

A simplified mode of action: Bio-Gel[®]

Unlike any other product on the market, Bio-Gel is an innovative carbohydrate-based hydrogel solution ensuring that more nutrients stay in the soil and available to fuel crop growth effectively.

Bio-Gel technology is a carbohydrate-based hydrogel that helps retain soil moisture and nutrients, stimulating soil biology and promoting healthy root development. As a tank mix additive, it encapsulates mobile nutrients, preventing loss through leaching. When applied directly to plant roots, Bio-Gel acts as a protective barrier, safeguarding plants against abiotic stressors such as drought and salinity.

Impact of MBA Corn In-Furrow Starter Fertilizer Program on Volumetric Soil Moisture Content at the 3" Soil Depth



Boost your water utilization, nutrient availability and yields with Bio-Gel[®]

- Bio-Gel technology increased mid-season short - medium term available nitrate nitrogen 44% when applied urea ammonium nitrate (UAN).
- Bio-Gel drives farm returns by increasing yields through water-efficiency and nutrient availability.
- Bio-Gel increases soil organic carbon.

Bio-Gel as a tank mix partner with liquid in-furrow starter treatment has shown corn harvested yield increases up to 17%. Replicated randomized complete block design yield data shows Bio-Gel when tank mixed with biologicals, biostimulants, and conventional grower standard liquid in-furrow starter fertilizers increases yield in corn and soybeans.



 **Midwestern BioAg**[™]



Bio-Gel[®] RootSurge[®]

Contact
an Expert
Today!



Bio-Gel RootSurge is a carefully formulated blend of carbohydrates designed to support the establishment of crops and promote the development of robust root systems.

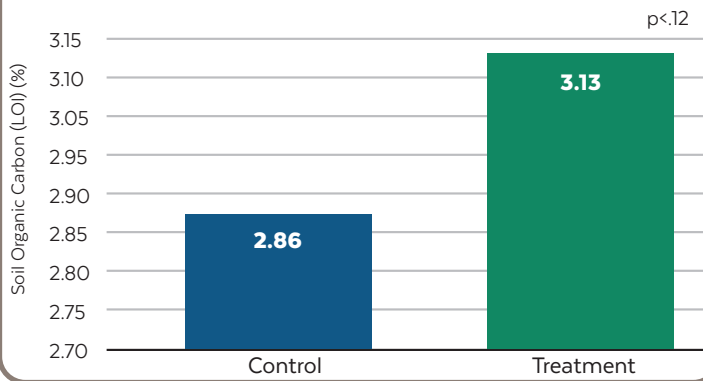
Bio-Gel RootSurge combines advanced water and nutrient retention capabilities in an effective solution for optimizing root growth and mitigating early-season stress.

Bio-Gel[®] technology increases soil organic matter 9% when applied as a tank mix additive for liquid in-furrow corn fertilizer treatments.

- Bio-Gel RootSurge application type: Early season and during vegetative growth.
- Bio-Gel Technology can be applied as a tank mix additive with common liquid conventional and organic fertilizers improving fertilizer use efficiency, crop production, and the environmental fate of many agrochemicals and fertilizers.*

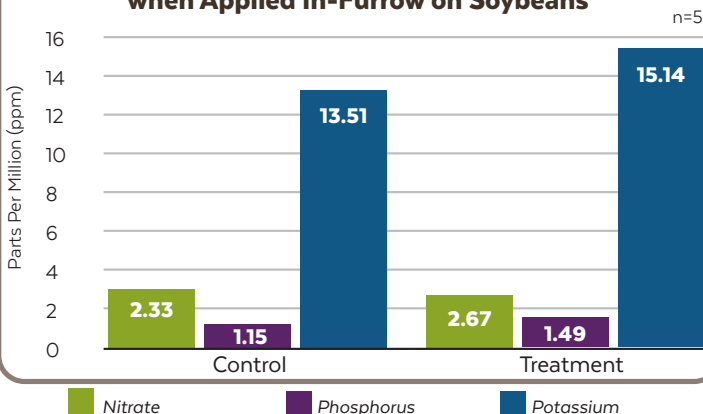
Increased soil organic carbon enhancing soil water-holding capacity and nutrient efficiency

Impact of In-Furrow Applications of Bio-Gel on In-Season Soil Organic Carbon 2024-Corn

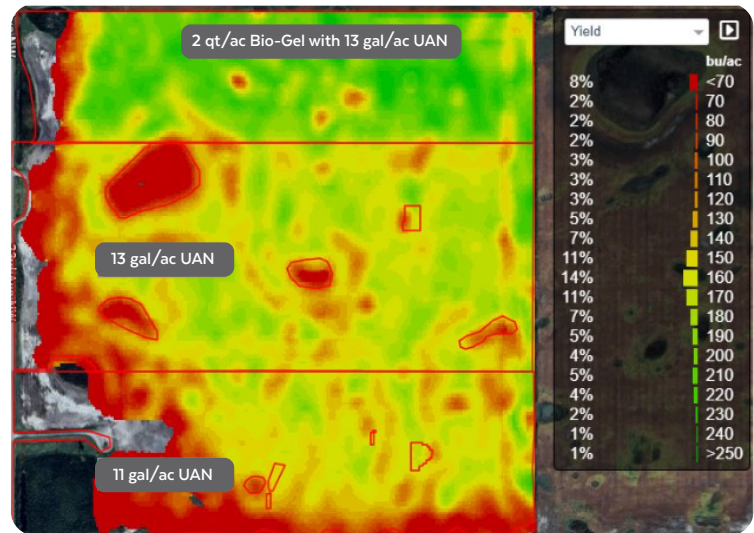


4 (ND and WI), n=147

Impact of Bio-Gel on Short - Medium Term Nitrate Nitrogen, Phosphorus, and Potassium when Applied In-Furrow on Soybeans



Bio-Gel RootSurge can increase corn yield more than 30%



The 2024 yield map from the Bio-Gel corn trial conducted in the northwestern-central region of North Dakota. In this trial, Bio-Gel was applied as an in-furrow liquid starter in conjunction with UAN and a TerraNu dry fertilizer blend.

TerraNu & Bio-Gel RootSurge Applied = 211.57 bu/ac. 35% uplift of 51 bu/ac (green section of image)
 Grower Standard (13 gal UAN) = 165.75 bu/ac
 Grower Standard (11 gal UAN) = 154.11 bu/ac

* Check with manufacture to ensure compatibility.